

2.8 p. 125129
The Roles of Slope and Intercepts

Equation of the Line

$y = mx + b$

m is the steepness of the line
the greater the magnitude the steeper the line
positive slope = + value (up and to the right)
negative slope = - value (down and to the right)
m = slope (rate of change)

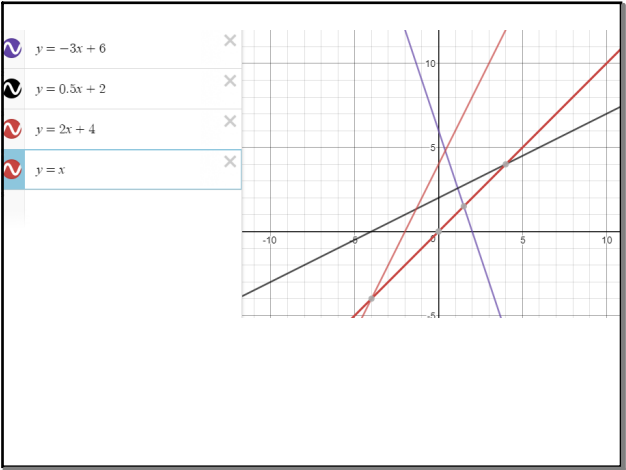
b = y intercept (point at which the line crosses the y axis)

Demonstrate role of m and b using TI83

Intercepts

Point at which the line crosses the x axis (x intercept) $y = 0$
and y axis (y intercept) $x = 0$
Graphed by Substitution

Feb 23-2:29 PM

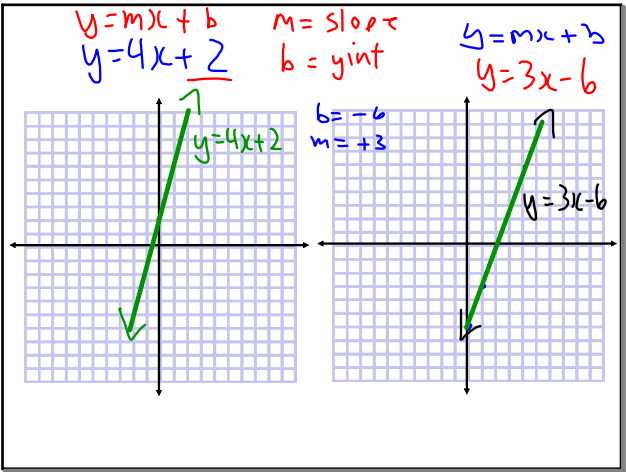


Oct 2-8:41 AM

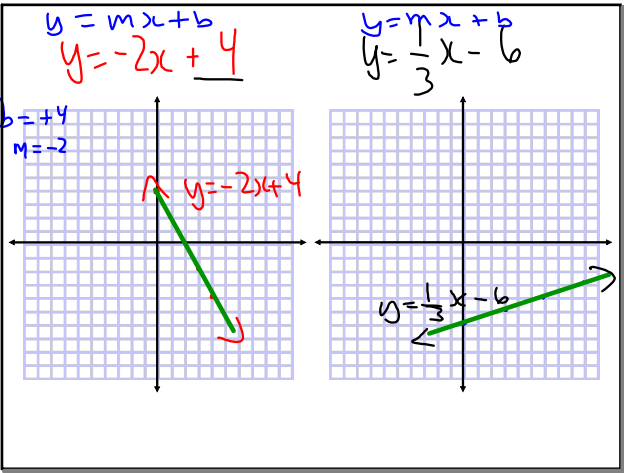
1) Graphing using the intercept method
 $y = 4x + 2$

A blank coordinate grid with x and y axes. The grid is 10 units wide and 10 units high, with a grid line every 1 unit.

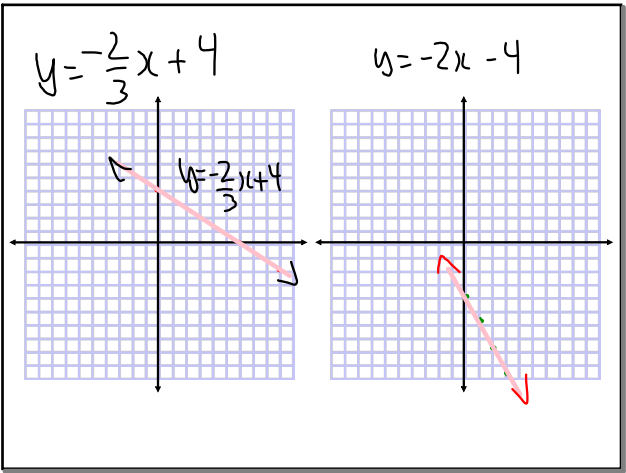
Feb 23-2:37 PM



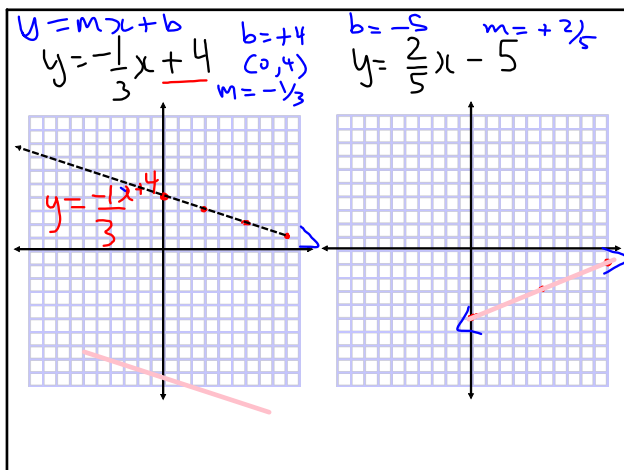
Mar 11-8:47 AM



Mar 11-8:47 AM



Mar 11-8:47 AM



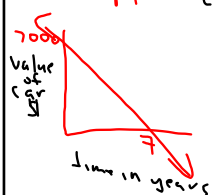
Mar 11-8:47 AM

Homework

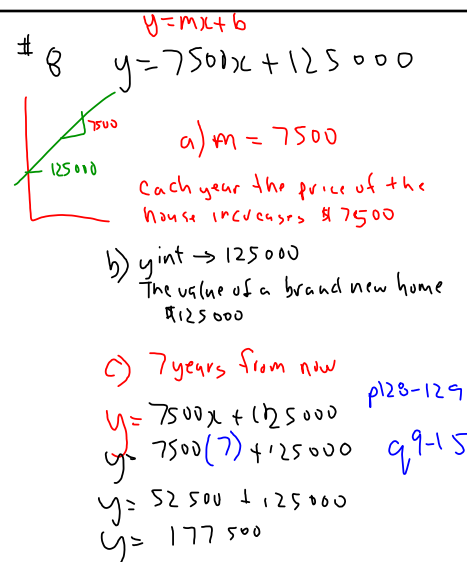
p. 127-129 q. 3-6, 8, 10, 12, 13

Oct 2-9:08 AM

Interpreting Graphs

b) x int 7 yrs before copier = \$10 y int - Brand New = \$17000 m - decrease in value
- \$1000/yr

Mar 11-1:33 PM



Mar 11-1:43 PM